



BRIDGEWATER

CROSS OVER
TO A
BETTER WAY
OF LIVING



NEW HOMES IN MIDLOTHIAN FROM \$300s MODEL HOMES NOW OPEN!

Cross over to a more relaxed lifestyle, where a friendly wave and small-town charm are still a part of everyday life. Bridgewater in Midlothian offers the finest in master-planned living with unique amenities and the area's best builders – all just a short drive from everything the DFW Metroplex has to offer.

[DISCOVER BRIDGEWATER >](#)

NEW HOMES AVAILABLE NOW!

Tri Pointe Homes

2224 Shady Elm Road	4 bed/3 bath/2 car	1 Story	2,037 sq. ft	\$419,668	Now
2216 Shady Elm Road	4 bed/2 bath/2 car	2 Story	2,565 sq. ft	\$429,020	Now
2231 Oak Branch Trail	4 bed/2.5 bath/2 car	2 Story	2,900 sq. ft	\$459,615	Now
2409 Hitchford Street	3 bed/2 bath/2 car	2 Story	2,762 sq. ft	\$439,122	Now
5012 Hillside Green Trail	3 bed/2.5 bath/2 car	1 Story	2,521 sq. ft	\$454,311	Now
2446 Hitchford Street	4 bed/3.5 bath/3 car	2 Story	3,495 sq. ft	\$579,651	Now
4848 Cedar Bluff Trail	4 bed/3.5 bath/3 car	1 Story	3,318 sq. ft	\$579,669	Now
4844 Cedar Bluff Trail	5 bed/3 bath/2 car	2 Story	3,907 sq. ft	\$627,706	Now

American Legend Homes

4446 Timberdrift Street	4 Bed/3.5 Bath/2 Car	2 Story	3,164 sq. ft	\$579,000	Now
-------------------------	----------------------	---------	--------------	-----------	-----

John Houston Homes

1409 Ripple Glass Road	4 bed/2 bath/2 car	1 Story	2,028 sq. ft	\$474,900	Now
2050 Slipchannel Street	4 bed/3 bath/2 car	1 Story	2,611 sq. ft	\$545,000	Now
1845 Rough Ridge Trail	4 bed/3 bath/2 car	1 Story	2,275 sq. ft	\$524,990	Now
1869 Rough Ridge Trail	4 bed/3 bath/2 car	1 Story	2,031 sq. ft	\$474,900	Now
1873 Rough Ridge Trail	4 bed/3 bath/2 car	1 Story	2,275 sq. ft	\$499,990	Now
1417 Roundwash Way	4 bed/3 bath/2 car	1 Story	2,275 sq. ft	\$499,990	Now
1417 Ripple Glass Rd	4 bed/3 bath/2 car	1 Story	2,275 sq. ft	\$499,990	Now

Highland Homes

2038 Dripping Spring Ave.	4 bed/3 bath/2 car	1 Story	2,337 sq. ft	\$500,245	Oct
2034 Dripping Spring Ave.	4 bed/4.5 bath/2 car	2 Story	3,003 sq. ft	\$589,220	Oct
2042 Dripping Spring Ave.	4 bed/3 bath/2 car	1 Story	2,305 sq. ft	\$490,255	Nov
2037 Trickle Creek Lane	4 bed/3 bath/2 car	1 Story	2,305 sq. ft	\$500,030	Nov
2033 Trickle Creek Lane	4 bed/3 bath/2 car	2 Story	2,971 sq. ft	\$571,055	Nov

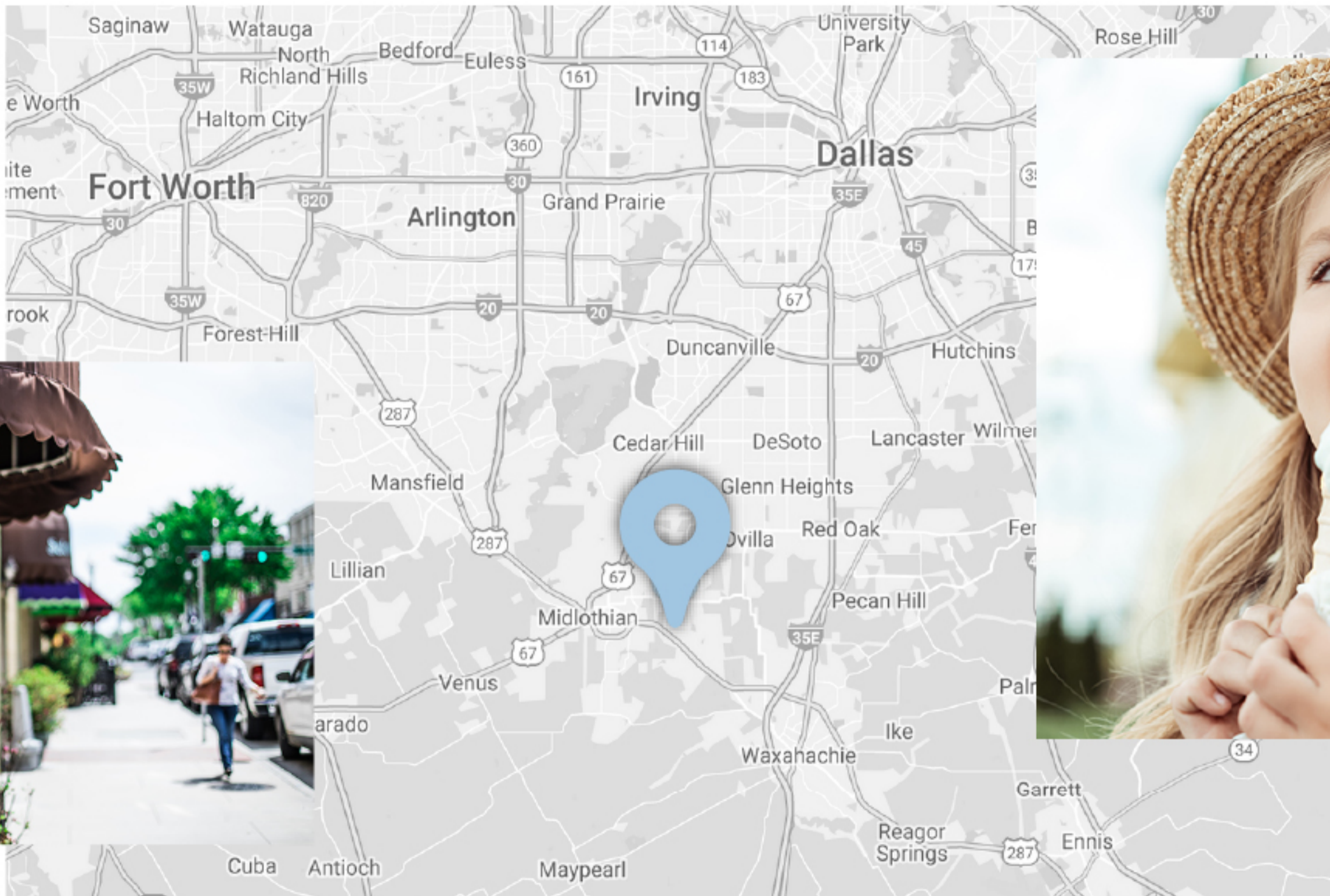
Perry Homes

4816 Trickle Spring Way	4 bed/4 bath/3 car	1 Story	3,433 sq. ft	\$788,900	Sep
1832 Anadarko Way	4 bed/3 bath/3 car	1 Story	2,695 sq. ft	\$660,900	Sep
1836 Anadarko Way	5 bed/4 bath/3 car	2 Story	3,800 sq. ft	\$765,900	Sep

*Dates and availability as of May 18, 2026. For updated pricing, inventory and information, contact the onsite builder sales consultants.

SMALL-TOWN CHARM

Welcome To Midlothian



[CLICK TO EXPLORE >](#)

BridgewaterTX.com
469-612-3810

©2025 All Rights Reserved

