

MODEL HOME NOW OPEN

book appointment

visit the model

LIMITED TIME 4% REALTOR COMMISSION*
+ EXCLUSIVE INCENTIVE FOR FIRST 5 BUYERS!



rainwater crossing

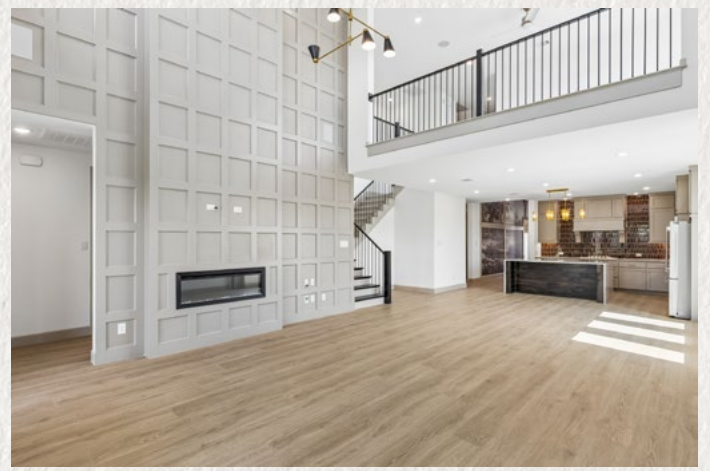
NEW HOMES FROM THE MID \$400s

Come tour the model and discover where nature, design, and community come together. Rainwater Crossing is Celina's newest master-planned community, thoughtfully designed for connection, comfort, and everyday living.

Visit the newly opened model home by Normandy Homes and experience timeless architecture, flexible interiors, and inspired outdoor living.

HOMES DESIGNED FOR LIFE

- One- and two-story single-family homes
- 3 to 5 bedrooms and up to 5.5 baths
- 2,165 to 3,600+ square feet
- Elegant architectural details
- Flexible home plans



AMENITIES THAT CONNECT YOU TO THE OUTDOORS

- Resort-style pool & splash pad
- Clubhouse and gathering spaces
- Pickleball courts and open areas
- Parks, playgrounds & hammock park
- 6+ miles of walking and biking trails

4 MILES NORTHEAST OF DOWNTOWN CELINA

- Located in fast-growing Celina, TX
- Zoned to Celina ISD
- Convenient access to shopping, dining, and major highways
- Small-town charm with big-city proximity

