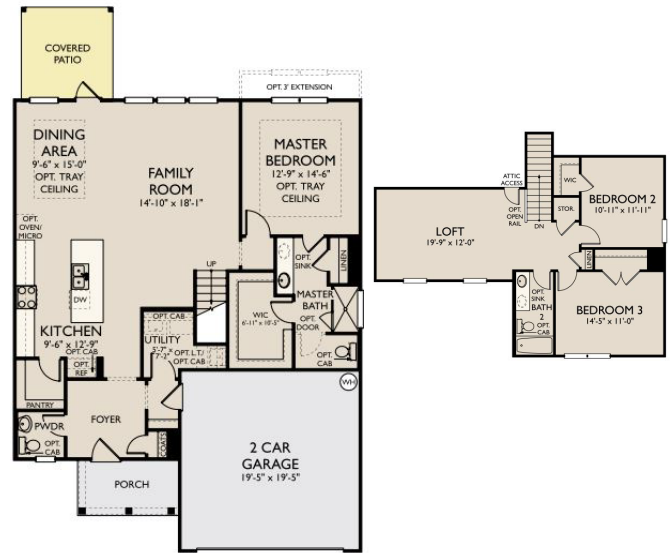




ASHTON WOODS™

Beautiful Quick Move-In Home Ready for Immediate Move-In! Meridian – 4715 Corona Australis



MLS #1578648 Was \$393,990, Now **\$356,990**
4715 Corona Australis, San Antonio, TX 78245

This beautiful home invites guests in with a sunlit kitchen featuring upgraded 42" cabinets, an oversized, center-island with pendant lights that's sure to become the social hub of the home. Family room includes three large windows that look out onto the backyard. Secluded master suite features a private bath with oversized, mud-set shower and a walk-in closet. Upstairs includes two secondary bedrooms and a loft. Covered patio on back of the home. **IMMEDIATE MOVE-IN!!**

**Please contact Jodie Downs at 210-729-0588 or
jodie.downs@ashtonwoods.com for more information.**



Realtor bonus is available on select inventory homes contracted on or after 9/19/22, and home must close by 10/31/22. Bonus available to licensed Realtors only and must fulfill requirements of and execute co-brokerage agreement to receive payment of bonus. Not available on rewrites. Effective 10/19/22 and subject to change without notice. © 2022 Ashton Woods Homes. All rights reserved. All trademarks herein, including Ashton Woods, the "AW" logo, the "AW Ashton Woods" logo, and "Home to Inspiration," are the property of Ashton Woods Homes and may not be used without express written permission. Prices may not include lot premiums, upgrades, or options. Community Association and golf fees may be required. Ashton Woods Homes reserves the right to change plans, specifications, pricing promotions, incentives, features, elevations, floorplans, designs, materials, amenities, and dimensions without notice in its sole discretion. Square footage and dimensions are approximate, subject to change without prior notice or obligation and may vary in actual construction. All renderings, color schemes, floorplans, maps, and displays are artists' conceptions and are not intended to be an actual depiction of the home or its surroundings. Actual position of home on lot will be determined by the site plan and plot plan. Floorplans are the property of Ashton Woods Homes and are protected by the U.S. copyright laws.