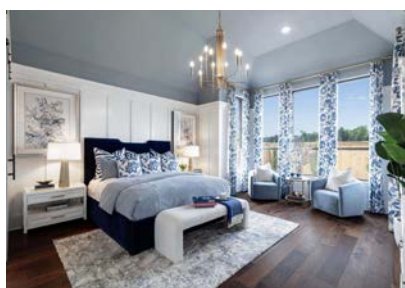
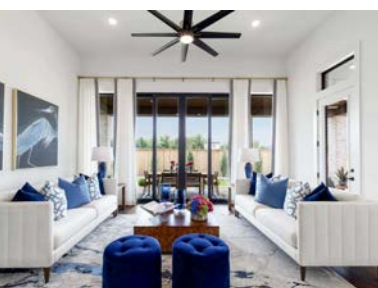


# Mayfair 60s

## MODEL HOME FOR SALE

**MOVE-IN  
READY!**

**\$929,000**



**Debbie Lopez**

O: 512-834-8444

C: 512-665-3660

### **310 Cleveland Way, New Braunfels, TX 78130**

216 D Plan | 1 Story | 3,050 SF | 4 Beds | 4.5 Baths | Study | 3 Car Garage

This model is one of our top-selling designs and showcases premium upgrades including an Enhanced Laundry Craft Room, Extended Outdoor Living with two sliding glass doors, an Expanded Primary Suite with a freestanding tub and separate shower, a Farmhouse Kitchen, a Fireplace in the Keeping Room, and an Enhanced Primary Closet. Plans for this community include over 300 acres of public parks, connected by 35 miles of trails, onsite Comal ISD schools.

Price and availability for the sale of any model home is subject to change without notice. All representations regarding square footage of a model home are approximate. Home is sold without the staged furniture currently in the residence, and all photography regarding the furniture or furnishings is only representative. Model home must close by October 31, 2025. The Builder's Limited Warranty for a model home begins to run on the date that the home is enrolled with the warranty administrator, so certain aspects of the Limited Warranty will be expired or reduced at the time of purchase. All rights reserved.

